



Villeroy & Boch

---

1748

USA & Canada

PRICE LIST 2023

SANITARYWARE · BATHROOM FURNITURE · WELLNESS



# INDEX

---

## GENERAL INFORMATION

---

Important Notes	2
General Terms And Conditions	3
Warranty	4

---

SANITARYWARE & BATHROOM FURNITURE	7-42
-----------------------------------	------

---

## IMPORTANT NOTE

### Sanitaryware & Bathroom Furniture

Price list 2022 replaces all earlier price lists. It applies to all deliveries as of July 1st, 2022.

Shades and dimensions subject to the usual tolerances. We reserve the right to make technical modifications to the range and alter colors.

This document may only be reproduced or copied in full or in part in any form with the producer's permission.

#### Price information

The prices given in this price list are recommended prices in USD and are valid from 1st of July 2022. All prices are subject to sales tax.

We reserve the right to make (price) changes; prices are subject to printing errors. Claims arising from incorrect prices and descriptions shall not be considered.

All offers, sales and deliveries of sanitaryware, bathroom furniture as well as accessories are subject to our "General Sales Conditions".

The prices of all washbasin models and bidets only cover the ceramics.  
**The faucet fittings and soap dispensers shown are not included in these prices.**  
 The prices of furniture / furniture elements do not include the ceramics.

#### Sanitaryware

The ceramic materials used by Villeroy & Boch are very robust. They are capable of withstanding all temperature strain caused by hot or cold water or steam.

The glazed surfaces of Villeroy & Boch's sanitary ceramics are able to withstand all soap-water solutions and acids generally arising in the sanitary area. This does not include hydrofluoric acid or compounds. Nor is the surface affected by organic solvents and intensive agents.

The symbols for the faucet hole and overflow are explained on the fold-out cover page.

#### Furniture

The bathroom furniture programmes from Villeroy & Boch feature high-quality materials and craftsmanship. Our own production facilities in Germany and Austria guarantee a uniform high quality. Furniture may only be assembled by a qualified professional in accordance with the assembly instructions enclosed and using the attachment materials supplied.

Further information, such as 2D/3D data or brochures, is available to download from the company website.

## Wellness

#### General

All Villeroy & Boch baths and shower trays are manufactured from top quality bathroom developed acrylic reinforced with glass fibre, or from the unique Quarryl®. Quarryl® is a synthetic material developed by Villeroy & Boch which is cast in moulds, therefore very exact designs can be produced. The synthetic material is colored all the way through and retains its color and shine for many years.

#### Design

Acrylic and, in particular, Quarryl® can be formed into all sorts of shapes very easily so that innumerable bathroom designs are possible. There is a suitable bath for all bathrooms: rectangular, hexagonal, oval or corner bath. From modern and minimalistic to royal and comfortable with handgrips and headrests. You will always feel at home in a Villeroy & Boch bath.

#### Temperature take-up

The material, be it acrylic or Quarryl®, takes on the temperature of the bath water almost immediately. This has the big advantage that you will not receive a cold shock when you lie down in the bath or step into the shower.

#### Heat insulation

Acrylic and Quarryl® conduct heat slowly. Therefore the heat from the bath water is retained longer. This insulating capacity has the added advantage that the bath does not have to be continually topped up with hot water.

#### Maintenance

The surfaces of acrylic and Quarryl® have no pores so they repel bacteria. Dirt, limescale and soap residue are virtually unable to gain a hold on the material, so that maintenance is restricted to wiping down with a wet cloth or sponge and the use of a non-scouring cleanser.

#### Material

Acrylic and Quarryl® are very durable materials which, when correctly maintained, keep their color and shine for many years. Quarryl® is partly composed of natural materials. One of the characteristics of Quarryl® is that, in exceptional cases, small irregularities may appear in its structure. Scratches in acrylic materials are seldom. Naturally light damage or burn marks can occur, but these can be very easily removed from acrylic by using fine sandpaper (no. 1000 to 1200) and a small piece of fine steel wool. After this shining color surfaces must be further treated with a car polish compound to reproduce the original lustre. It is also possible to repair damage to Quarryl®. We advise you to contact our professional service department if any of your Quarryl® product become damaged.

#### Price information

\* The prices given in this price list are recommended retail prices in \$ and are valid from July 2022.

\* We reserve the right to make (price) changes and to correct printing/typing errors. No rights can be derived from errors made in prices and descriptions.

\* All prices excl. sales tax.

# GENERAL TERMS AND CONDITIONS

---

Possession of this Price List does not constitute an offer to sell.

<b>Terms:</b>	Net 30 days. A late payment of 1.5% per month will be accrued on past due balances. All invoices must be paid as invoiced. Credit memos shall be issued for any errors in invoicing.
<b>Freight:</b>	Freight terms and costs are outlined in the Icera   Villeroy & Boch Direct Purchasing Program.
<b>Prices:</b>	Orders will be invoiced at the discounts outlined in the Icera   Villeroy & Boch Direct Purchasing Program.
<b>Orders:</b>	All orders are subject to acceptance by Icera   Villeroy & Boch. Orders are subject to credit approval prior to shipment.
<b>Additions:</b>	Items may be added to existing orders up to 1 business day after confirmation.
<b>Cancellations:</b>	Items may be canceled within 1 business day after order confirmation at no charge. Orders canceled after 1 business day will be assessed a \$20 per pallet re-stocking fee.
<b>Returns:</b>	A return authorization must be obtained by submitting an Icera   Villeroy & Boch RGA form prior to any merchandise being returned. This form must be filled out accurately and completely by the customer, following all instructions on the form. Merchandise held longer than 30 days after the date of shipment will not be accepted for return. All transportation charges for returned goods must be paid by the customer. There will be a re-stocking charge of 35% on all returned merchandise.
<b>Returned Checks:</b>	A \$35.00 service charge will be invoiced on all returned checks.
<b>Shortage:</b>	Claims for shortages must be made within 5 days from the receipt of merchandise and must be noted on the bill of lading. The notice of shortage must be submitted to Icera   Villeroy & Boch in writing via email or our RGA form for research. If it is determined by Icera   Villeroy & Boch that a shortage has occurred, we will ship the shorted items or issue a credit for those items at the customer's option.
<b>Concealed Damage:</b>	Means loss or damage that does not become apparent until the merchandise has been unpacked. The contents may be damaged in transit due to rough handling even though the packaging may not show external damage. When the damage is discovered upon unpacking, you must make a written request for replacement/credit to Icera   Villeroy & Boch via our RGA form with accompanying photos that clearly show the damage of the product as well as the condition of the packaging, within fifteen (15) days of the delivery date. By following these instructions carefully, we will be able to process your claim to protect against loss from the concealed damage.
<b>Visible Damage:</b>	Any external evidence of damage must be noted on the freight bill or express receipt and signed by the carrier's agent. Forward photos of the damaged product as well as an RGA form to Icera   Villeroy & Boch for review. Failure to thoroughly document such external damage will result in the denial of your claim.

## Product Dimensions and Weights

Product dimensions, product weights and shipping weights in this price list are approximations provided for customer convenience and should not be relied upon for installation or calculating shipping costs.

# WARRANTY

---

## CERAMIC PRODUCTS

Icera | Villeroy & Boch USA provides a LIMITED LIFETIME WARRANTY for its branded vitreous china and fire clay plumbing fixtures to be free of defects in material and workmanship. Product damage after shipping, scratching, staining, and other effects from chemical use, water, and atmospheric conditions are not considered manufacturing defects but are considered wear and tear. Use of in-tank toilet cleaners will void the warranty.

## ELECTRONIC BIDET SEATS

For electronic bidet seats and integrated bidet toilet seats, Icera | Villeroy & Boch USA provides a warranty against defects in material and workmanship limited to three (3) years from the date of purchase. Scratching, staining, and other effects from chemical use, water, and atmospheric conditions are not considered manufacturing defects but are considered normal wear and tear. Use of the bidet set with non-conforming electricity supply / water supply pressure, outside of the specified supply parameters, will void the warranty.

## VANITIES & STONE TOPS

For vanities, wood furniture and stone tops, Icera | Villeroy & Boch USA warrants its products to be free from defects in material and workmanship for one (1) year from the date of purchase by the original purchaser. This warranty does not cover: costs of removing warranted material or installation of replacement material, natural variations and aging inherent in wood, normal wear and tear of damage / defects caused by mu-use, physical or chemical abuse, improper installation or maintenance, use of caustic grout or caulking during install, negligence or modification in any way.

**Door & Drawer Considerations:** Please ensure the drawers and doors have been installed properly, by adjusting the rails and hinges. Doors that are warped 1/4" or less should hang for 2 months before replacement is requested. Typically, a door will return to its normal flat position once it has acclimated to temperature and humidity conditions.

**Wood Characteristics:** Wood is a beautifully natural material. The figuring (grain) of each piece is unique to every vanity produced. Every vanity will contain a different figure, including birdseye knots and heartwood streaks. These are not considered defects, but beautifully unique character. There will also be a natural aging of every wood species over time which changes the overall color of the vanity. In most instances, this will be a darkening of dark woods and a yellowing of light woods. Direct sunlight will hasten this effect. Given this natural beauty, no two vanities will ever match in figure or color (if stained or clear-coated) and warranty replacement doors and drawers will not match the existing surrounding wood figure or color.

**Painted Panels:** The face frame, box, doors and drawer fronts of our painted line of vanities are made of solid wood components that have been assembled and then finished with a durable painted finish. Since solid wood naturally expands and contracts, the joints on a painted vanity do the same. As a result, you may see hairline cracks in the finish surface at box, door and drawer joints. These joint lines are normal and do not affect the strength of the construction. These cracks can be filled and finished periodically with commercially available products although may return with repeated expansion and contraction. These cracks are not considered defects in solid wood cabinetry.

**Stone Characteristics:** As with wood, natural stone products will have naturally occurring characteristics such as variation in grain, color and mineral streaks due to this natural beauty, new and / or replacement pieces may not match display samples or existing pieces.

## HARDWARE & PARTS

For non-ceramic hardware items and parts, such as fixture trim, various fittings, toilet bowl seats, and tank flushing mechanisms, Icera | Villeroy & Boch USA provides a warranty against defects in material and workmanship limited to one (1) year from the date of purchase. Changes in finish gloss, scratching, staining, and other effects from chemical use, water, and atmospheric conditions are not considered manufacturing defects but are considered normal wear and tear. Variations in color will occur naturally due to manufacturing processes and are not covered under this warranty. Use of in-tank toilet cleaners will void the warranty.

## GENERAL

The above warranty is extended only to the original purchase of the product(s). This warranty is non-transferable. Proof of purchase is required for all warranty claims. This warranty is voided and does not apply where items have been improperly stored, damaged, or improperly installed.

Icera | Villeroy & Boch USA reserves the right to inspect claimed defective products. Icera | Villeroy & Boch USA will, at its election, repair, replace or make appropriate adjustment where Icera | Villeroy & Boch USA inspections disclose any such defects occurring in normal usage within the warranty period after purchase. Comparable products will be offered as replacements for products not then available. Some replacement parts may vary from those originally supplied and are subject to availability.

Icera | Villeroy & Boch USA is not responsible for removal or installation costs.

Warranties are not applicable to products sold by unauthorized resellers. The consumer accepts responsibility to research the integrity and reputation of the reseller to ensure they are authorized to sell and provide appropriate pre purchase and post purchase service. Internet resellers should be particularly scrutinized as they are very difficult to evaluate and often provide very limited to no customer service.

This warranty applies to unmodified products when properly installed and maintained per factory instructions for their normal and intended application. Icera | Villeroy & Boch USA highly recommends installation by a licensed professional plumbing contractor. To obtain service or to purchase replacement parts not covered by the above warranty, contact your local Icera | Villeroy & Boch USA dealer.

Icera | Villeroy & Boch USA reserves the right to make changes in product design, manufacturing process, packaging, or availability at any time without notice.

Implied warranties including that of merchantability and fitness for a particular purpose are limited to the duration of this warranty. Icera | Villeroy & Boch USA and / or dealer expressly disclaims any liability for special, incidental or consequential damages.

Some states / provinces do not allow limitations on how long an implied warranty lasts, or the exclusion or limitation of special, incidental or consequential damages, so these limitation and exclusions may not apply to you. This warranty gives you specific legal rights. You may also have other rights which vary from state / province to state / province.

This is Icera | Villeroy & Boch USA's exclusive written warranty. This exclusive written warranty is issued in lieu of all other warranties, expressed or implied, including but not limited to the implied warranties of merchantability and fitness for a particular purpose.

# CERAMIC INTRODUCTION

---

## Ceramic colours

### Glossy colors



01 White Alpine

### Bicolour



BCW0 Fog



BCW2 Ocean



BCW9 Indian Summer



BCT0 Powder



BCT7 French Linen



BCS8 Sage Green



BCS9 ordeaux

### Metal surfaces



61 Chrome



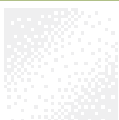
EF Satin Nickel



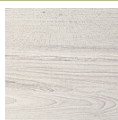
D7 Stainless Steel

## Furniture Finishes

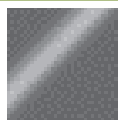
### Colors



DH Glossy White



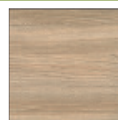
E8 White Wood



FP Glossy Grey



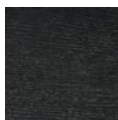
PJ Oak Nebraska



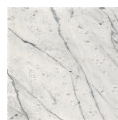
PN Elm Impreso



PV American Walnut



PW Black Ash



RC Carrara



RP Nero Marquina



VS White

## CERAMIC INTRODUCTION

### SupraFix 3.0\*

SupraFix 3.0 has a patent pending and makes the installation of wall-mounted toilets more flexible. The toilets can be installed swiftly and simply by just one person – conveniently from above and without visible attachment. Now new: The toilet seats can be positioned as required by the customer.

#### Simple and flexible installation

- Easy toilet installation from above by one person
- 2-in-1 installation of the toilet and toilet seat using the same holes
- Vario-nut for flexible installation and exact positioning of the seat

#### Perfect toilet design

- Invisible fastening: no visible screws or cover caps
- Toilet seat can be positioned individually as required

*\*Not applicable to all models*



### DirectFlush

#### The rimless generation of toilets

- Flushes the entire inner bowl without splashing
- Maximum flushing performance thanks to precise water flow
- Easy, quick cleaning thanks to the rimless design
- Visible hygiene for the user, too

### CeramicPlus

#### The dirt-repellent surface finish

- Non-stick effect prevents limescale deposits
- Permanent dirt-repellent effect for a brilliant shine
- 90% less water consumption\*, cleaning agent \*\* and cleaning time\*\* than before
- Available for Artis collection





# SANITARYWARE & BATHROOM FURNITURE

---



# INDEX - SANITARYWARE AND BATHROOM FURNITURE

## OVERVIEWS

Washbasins	7-8
Toilets	9
Bidets	10

## BATH CERAMIC

## & BATHROOM FURNITURE

Architectura	11-17
Artis	18-19
Loop & Friends	20-21
Memento 2.0	22-25
Novo	26-27
Strada	28-29
Subway	30-36
Venticello	37-42

# WASHBASINS ACCORDING TO SHAPE AND DIMENSION

OVERVIEW

## Washbasin

23 5/8"	23 5/8"	31 1/2"	31 1/2"	39 3/8"	39 3/8"
<b>ADA</b>	<b>ADA</b>	<b>ADA</b>	<b>ADA</b>	<b>ADA</b>	<b>ADA</b>
Subway 7113 U1 (33)	Venticello 4124 U1 (42)	Venticello 4104 U5 (39)	Architettura 4A13 U8 (12)	Subway 7175 U0 (32)	Venticello 4104 U3 (39)

## Washbasin

39 3/8"	47 1/4"	47 1/4"	47 1/4"	51 1/8"	51 1/8"
	<b>ADA</b>			<b>ADA</b>	<b>ADA</b>
Architettura 4A13 U1 (12)	Venticello 4104 U1 (38)	Architettura 4A13 U2 (12)	Architettura 4A13 UC (12)	Subway 7175 U4 (31)	Subway 7176 U0 (31)

## Surface-mounted Washbasin

16 7/8"	16 1/8"	19 5/8"	22 7/8"	23"	23"
				<b>ADA</b>	<b>ADA</b>
Artis 4179 U4 (19)	Artis 4178 U4 (19)	Memento 2.0 4A07 U5 (25)	Artis 4172 U5 (19)	Loop & Friends 5151 0U (21)	Loop & Friends 5154 0U (21)

## Surface-mounted Washbasin

23 5/8"	24"
Memento 2.0 4A07 U6 (24)	Artis 4198 U6 (19)

\*\* - Special Order - estimated 27 weeks lead time

# WASHBASINS ACCORDING TO SHAPE AND DIMENSION

OVERVIEW

## Undercounter washbasin

17 1/2"



Architectura  
2800 UL (13)

17 3/4"



Loop & Friends  
6163 U1 (21)

ADA

18 1/8"



Architectura  
2432 UL (13)

18 1/8"



Architectura  
2432 UA (13)\*\*

ADA

18 3/4"



Architectura  
2410 UL (13)

## Undercounter washbasin

18 3/4"



Architectura  
2410 UA (13)\*\*

ADA

20 1/4"



Architectura  
2420 UL (13)

20 1/4"



Architectura  
2420 UA (13)\*\*

ADA

20 1/4"



Architectura  
2442 UL (13)

20 1/4"



Architectura  
2442 UA (13)\*\*

ADA

## Undercounter washbasin

21 1/4"



Loop & Friends  
6163 U0 (21)

ADA

24 1/4"



Loop & Friends  
6163 U2 (21)

ADA

\*\* - Special Order - estimated 27 weeks lead time

# OVERVIEW TOILETS

OVERVIEW

## 1-PC toilet

floor-standing

ADA



Architectura  
5697 UW (14)

floor-standing

ADA



Novo  
6200 UC (27)

floor-standing

ADA



Strada  
6330 UC (29)

floor-standing



Subway  
6616 US (34)

## 2-PC toilet

floor-standing

ADA



Architectura  
5645 UW (14)

floor-standing,  
siphonic

ADA



Strada  
3210 UC (29)

## Wall-mounted toilet

wall-mounted

ADA



Architectura  
5170 UC (14)

ADA



Subway  
7400 UC (34)

\*\* - Special Order - estimated 27 weeks lead time

# OVERVIEW BIDETS

---

OVERVIEW

**Bidet wall-mounted**  
**wall-mounted**



**Subway**  
4600 UF (34)

---

\*\* - Special Order - estimated 27 weeks lead time

# ARCHITECTURA

Sanitaryware and Bathroom Furniture

ARCHITECTURA



Ceramic colours



01 = White  
Alpine

Front- / Body colors



PJ = Oak  
Nebraska



VS = White

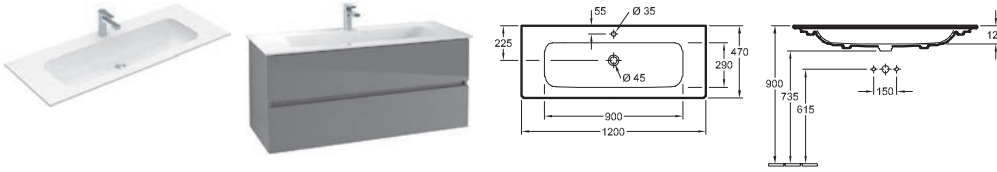
# ARCHITECTURA

US \$ (Dollar)

Registered design

Please order faucet fittings and soap dispenser separately

## VANITY BATHROOM SINK

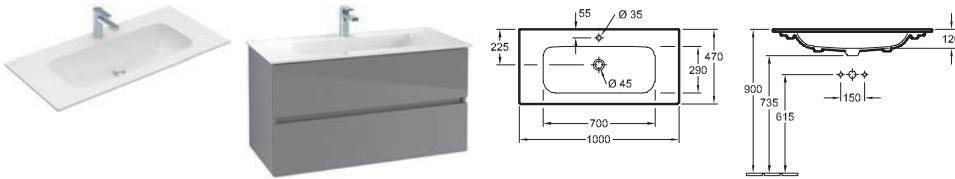


Article number	Description	01		pcs/ pal.	lb/ pc.
4A13 U2 XX	47 1/4" x 18 1/2" ○ ○	\$ 1,100	-	6	56.7
4A13 UC XX	47 1/4" x 18 1/2" 2×○ ○ **SPECIAL ORDER, Sink is supported by vanity and needs to be installed together w/ matching V&B vanity	\$ 1,100	-	6	56.7

### CAN BE PAIRED WITH FURNITURE

Article number	Description	PJ, VS		lb/ pc.
B522 U0 XX	ARCHITECTURA VANITY UNIT 46 1/8" x 20 1/4" x 18 1/4", wall-mounted, fastening set included, see pg 17 for full details	\$ 1,768	-	32.84

## VANITY BATHROOM SINK



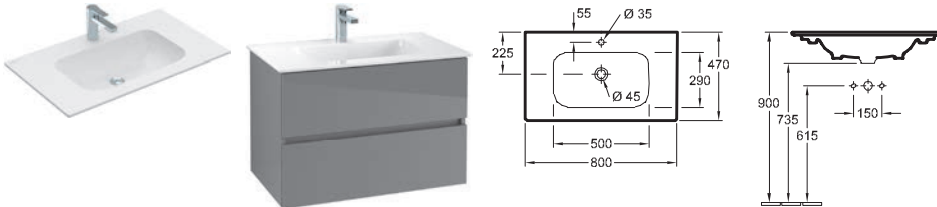
Article number	Description	01		pcs/ pal.	lb/ pc.
4A13 U1 XX	39 3/8" x 18 1/2" ○ ○	\$ 986	-	6	48.5

Sink is supported by vanity and needs to be installed together with the matching Villeroy & Boch vanity

### CAN BE PAIRED WITH FURNITURE

Article number	Description	PJ, VS		lb/ pc.
B521 U0 XX	ARCHITECTURA VANITY UNIT 38 1/4" x 20 1/4" x 18 1/4", wall-mounted, fastening set included, see pg 17 for full details	\$ 1,586	-	27.32

## VANITY BATHROOM SINK



Article number	Description	01		pcs/ pal.	lb/ pc.
4A13 U8 XX	31 1/2" x 18 1/2" ○ ○	\$ 904	-	6	38.1

Sink is supported by vanity and needs to be installed together with the matching Villeroy & Boch vanity

### CAN BE PAIRED WITH FURNITURE

Article number	Description	PJ, VS		lb/ pc.
B520 U0 XX	ARCHITECTURA VANITY UNIT 30 3/8" x 20 1/4" x 18 1/4", wall-mounted, fastening set included, see pg 17 for full details	\$ 1,430	-	23

Ceramic Colors: XX = Colour code to be indicated  
01 = White Alpine

Furniture Finishes: XX = Insert front and body colour  
PJ = Oak Nebraska, VS = White



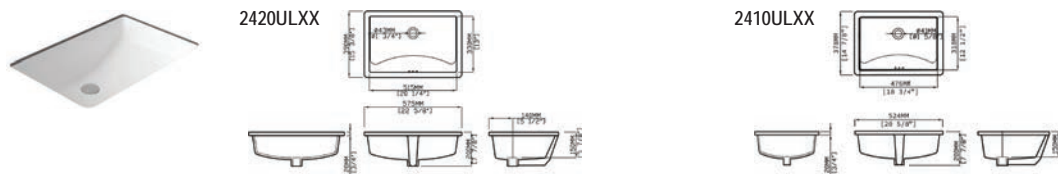
# ARCHITECTURA

US \$ (Dollar)

Registered design

Please order faucet fittings and soap dispenser separately

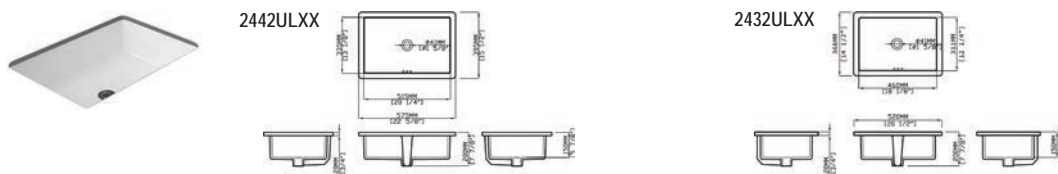
## UNDERMOUNT BATHROOM SINK (RECTANGULAR)



Article number	Description	01				pcs/ pal.	lb/ pc.
2420 UL 01	20 1/4" x 13"	\$282	-	-	-		
2410 UL 01	18 3/4" x 12 1/2"	\$193	-	-	-		
2420 UA 01	20 1/4" x 13"   **SPECIAL ORDER, CALL FOR LEAD TIME	<b>ADA</b> \$282	-	-	-		
2410 UA 01	18 3/4" x 12 1/2"   **SPECIAL ORDER, CALL FOR LEAD TIME	<b>ADA</b> \$193	-	-	-		

Interior glazed only, the hole for the washbasin can only be cut out using the original washbasin because dimension tolerances are possible, fastening set included, incl. installation instructions

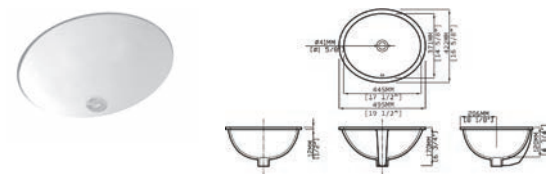
## UNDERMOUNT BATHROOM SINK (RECTANGULAR)



Article number	Description	01				pcs/ pal.	lb/ pc.
2442 UL 01	20 1/4" x 13 1/8"	\$318	-	-	-		
2432 UL 01	18 1/8" x 12 1/4"	\$220	-	-	-		
2442 UA 01	20 1/4" x 13 1/8"   **SPECIAL ORDER, CALL FOR LEAD TIME	<b>ADA</b> \$318	-	-	-		
2432 UA 01	18 1/8" x 12 1/4"   **SPECIAL ORDER, CALL FOR LEAD TIME	<b>ADA</b> \$220	-	-	-		

Interior glazed only, the hole for the washbasin can only be cut out using the original washbasin because dimension tolerances are possible, fastening set included, incl. installation instructions

## UNDERMOUNT BATHROOM SINK



Article number	Description	01				pcs/ pal.	lb/ pc.
2800 UL 01	17 1/2" x 14 5/8"	\$142	-	-	-		17.9

Interior glazed only, the hole for the washbasin can only be cut out using the original washbasin because dimension tolerances are possible, fastening set included, incl. installation instructions

Ceramic Colors: XX = Colour code to be indicated  
01 = White Alpine

Furniture Finishes: XX = Insert front and body colour  
PJ = Oak Nebraska, VS = White

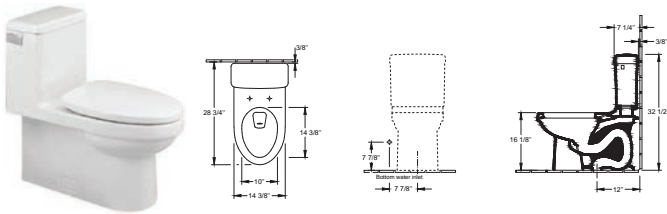
ARCHITECTURA


US \$ (Dollar)

Registered design  
Please order faucet fittings and soap dispenser separately

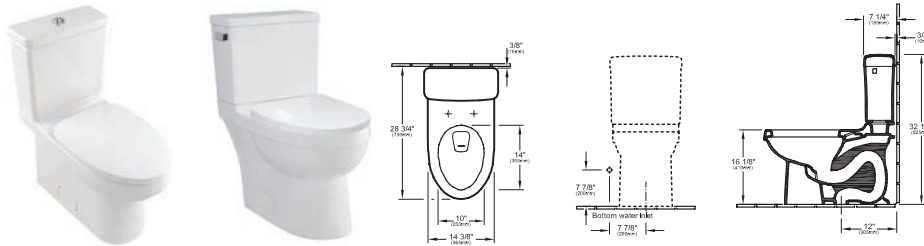
ONE-PIECE TOILET


Overall dimensions: (L) 28 1/2" x (W) 14 3/8" x (H) 29"



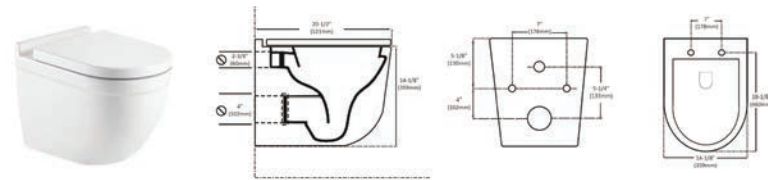
Article number	Description	01	XXX	pcs/pal.	lb/pc.
5697 UW 01	14 3/8" x 28 1/2"  ADA	\$ 867	-	8	102.7
siphonic jet model, skirted, elongated design, A.D.A. height, includes seat, floor-standing, concealed trapway with fixation covers, 12" rough-in					
F 74 XX	TRIP LEVER (optional) Modern style in .502 (Polished Nickel), .503 (Satin Nickel), .504 (Polished Brass), .508 (Venetian Bronze), .05 (Matte Black), .01 (White Enamel)		\$66		2.2


SIPHONIC TOILET



Article number	Description	01	XXX	pcs/pal.	lb/pc.
5645 UW 01	14 3/8" x 28 3/4"  ADA	\$ 418	-	12	91.7
siphonic jet model, elongated design, A.D.A. height, includes seat, floor-standing, concealed trapway with fixation covers, 12" rough-in					
7757 UW 01	TANK Standard bottom inlet, flushing mechanism with trip lever in chrome finish, 1.28 gpf (4.8 lpf)	\$ 225	-	36	30.9
7757 VW 01	DUAL FLUSH TANK Standard bottom inlet, flushing mechanism with trip lever in chrome finish, 1.28 gpf (4.8 lpf)	\$ 225	-	36	28.8
F 74 XX	TRIP LEVER (optional) Modern style in .502 (Polished Nickel), .503 (Satin Nickel), .504 (Polished Brass), .508 (Venetian Bronze), .05 (Matte Black), .01 (White Enamel)		\$66		2.2

WALL-MOUNTED TOILET



Article number	Description	01			pcs/pal.	lb/pc.
5170 UC 01	20-1/2" x 14-1/8" x 14-1/8"  ADA	\$ 520	-	-	6	56.3

washdown model, wall-mounted, concealed trapway, includes seat, this product works with industry standard in-wall carrier/tank systems such as those manufactured by Viega and Geberit. Please refer to their respective compatibility charts.

Ceramic Colors: XX = Colour code to be indicated  
01 = White Alpine

Furniture Finishes: XX = Insert front and body colour  
PJ = Oak Nebraska, VS = White

# ARCHITECTURA

US \$ (Dollar)

Registered design




Please order faucet fittings and soap dispenser separately

**Front:**  
 coated LDF in PJ, VS, VV (16 mm)  
 inside color grey matt  
 horizontal grain in PJ  
**Body:**

coated LDF in PJ, VS, VV (16 mm)  
 interior color to match décor  
 horizontal grain in PJ  
**Drawers:**  
 SoftClosing feature

Please note:

For further information such as tap fitting positions, installation and fastening dimensions etc. please see the technical drawings.

	VANITY UNIT	VANITY UNIT	VANITY UNIT
			
<b>Article number</b>	B522 U0 XX	B521 U0 XX	B520 U0 XX
<b>Dimensions (w x h x d)</b>	46 1/8" x 20 1/4" x 18 1/4"	38 1/4" x 20 1/4" x 18 1/4"	30 3/8" x 20 1/4" x 18 1/4"
<b>For combination with</b>	Architectura 4A13 U2/UC	Architectura 4A13 U1	Architectura 4A13 U8
<b>Equipped with</b>	2 x pull-out compartments	2 x pull-out compartments	2 x pull-out compartments
<b>Installation</b>	wall-mounted	wall-mounted	wall-mounted
<b>Scope of delivery</b>	fastening set included	fastening set included	fastening set included
<b>lb/pc.</b>	72.4	60.2	50.7
<b>PJ, VS</b>	\$ 1,768	\$ 1,586	\$ 1,430

Ceramic Colors: XX = Colour code to be indicated  
 01 = White Alpine

Furniture Finishes: XX = Insert front and body colour  
 PJ = Oak Nebraska, VS = White

# ARCHITECTURA

---

US \$ (Dollar)

Registered design

Please order faucet fittings and soap dispenser separately

Ceramic Colors: XX = Colour code to be indicated  
01 = White Alpine

Furniture Finishes: XX = Insert front and body colour  
PJ = Oak Nebraska, VS = White



# ARCHITECTURA

US \$ (Dollar)

Registered design

ARCHITECTURA

XX = Insert front and body colour  
PJ = Oak Nebraska, VS = White

# ARTIS

Sanitaryware



## Ceramic colours



R1 = White  
Alpine

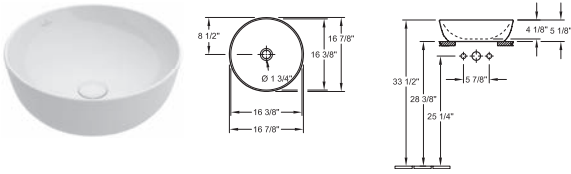
\*\* - Special Order - estimated 27 weeks lead time

# ARTIS

US \$ (Dollar)

Please order faucet fittings and soap dispenser separately

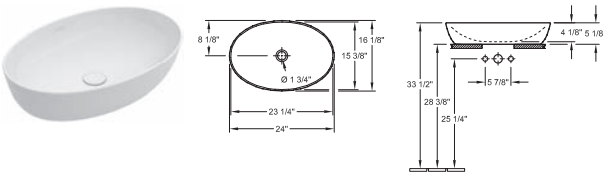
## SURFACE-MOUNTED BATHROOM SINK



Article number	Description	R1			pcs/ pal.	lb/ pc.
4179 U4 R1	16 7/8" Diameter For wall-mounted washbasin mixer or tall pillar faucet, without faucet hole area	\$ 722	-	-	16	18.1

Please note: unclosable grid drain must be used with models without overflow

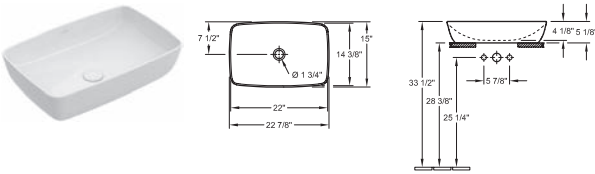
## SURFACE-MOUNTED BATHROOM SINK



Article number	Description	R1			pcs/ pal.	lb/ pc.
4198 U6 R1	24" x 16 1/8" For wall-mounted washbasin mixer or tall pillar faucet, without faucet hole area	\$ 763	-	-	12	23.1

Please note: unclosable grid drain must be used with models without overflow

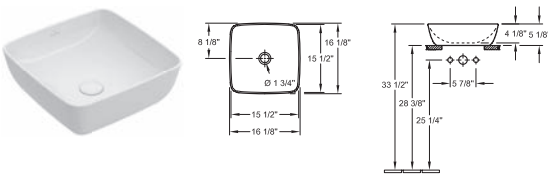
## SURFACE-MOUNTED BATHROOM SINK



Article number	Description	R1			pcs/ pal.	lb/ pc.
4172 U5 R1	22 7/8" x 15" For wall-mounted washbasin mixer or tall pillar faucet, without faucet hole area	\$ 753	-	-	12	25.4

Please note: unclosable grid drain must be used with models without overflow

## SURFACE-MOUNTED BATHROOM SINK



Article number	Description	R1			pcs/ pal.	lb/ pc.
4178 U4 R1	16 1/8" x 16 1/8" For wall-mounted washbasin mixer or tall pillar faucet, without faucet hole area	\$ 701	-	-	16	18.1

Please note: unclosable grid drain must be used with models without overflow

The colours Bicolour are made to order. Please enquire about delivery times when ordering.

XX = Colour code to be indicated  
R1 - White Alpine CeramicPlus



# LOOP & FRIENDS

Sanitaryware



Ceramic colours



01 = White Alpin



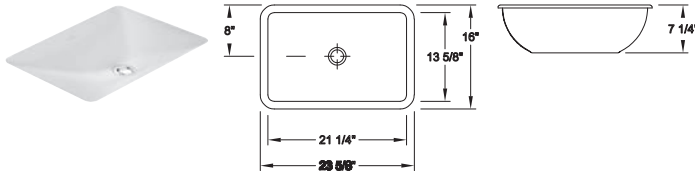
# LOOP & FRIENDS

US \$ (Dollar)

Registered design

Please order faucet fittings and soap dispenser separately

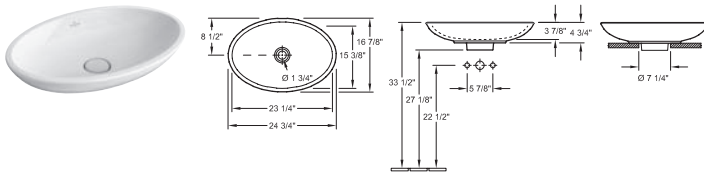
## UNDERMOUNT BATHROOM SINK (RECTANGULAR)



Article number	Description		01				pcs/ pal.	lb/ pc.
6163 U0 XX	21 1/4" x 13 5/8"	<b>ADA</b>	\$ 616	-	-	-	12	32
6163 U1 XX	17 3/4" x 11"	<b>ADA</b>	\$ 517	-	-	-	20	22.3

Outside surface fully glazed, centered drain, concealed overflow drain line, the hole for the washbasin can only be cut out using the original washbasin because dimension tolerances are possible, installation possible in natural stone and laminate countertops, incl. extended ball rod for pop-up waste, fastening set included

## SURFACE-MOUNTED BATHROOM SINK (OVAL)

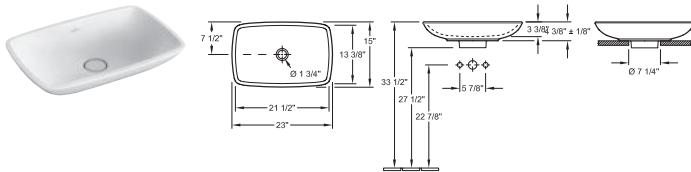


Article number	Description		01				pcs/ pal.	lb/ pc.
5151 OU XX	23" x 15"	<b>ADA</b>	\$ 654	-	-	-		20.3

incl. cut-out template, incl. ceramic cover, 1 1/4" tailpiece with nut and gasket, fastening set included

9223 10 61	POP-UP ASSEMBLY (optional) incl. extended ball rod for pop-up waste, European closable drain for use with faucet with pop-up		-	-	-	\$ 94		0.8
------------	---	--	---	---	---	-------	--	-----

## SURFACE-MOUNTED BATHROOM SINK (RECTANGULAR)



Article number	Description		01				pcs/ pal.	lb/ pc.
5154 OU XX	23" x 15"	<b>ADA</b>	\$ 651	-	-	-	18	22.7

incl. cut-out template, incl. ceramic cover, 1 1/4" tailpiece with nut and gasket, fastening set included

9223 10 61	POP-UP ASSEMBLY (optional) incl. extended ball rod for pop-up waste, European closable drain for use with faucet with pop-up		-	-	-	\$ 94		0.8
------------	---	--	---	---	---	-------	--	-----

XX = Colour code to be indicated  
01 = White Alpine

# MEMENTO 2.0

Sanitaryware



Ceramic colours



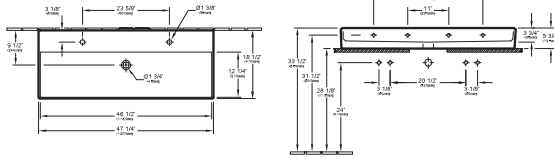
01 = White  
Alpine

# MEMENTO 2.0

US \$ (Dollar)

Please order faucet fittings and soap dispenser separately

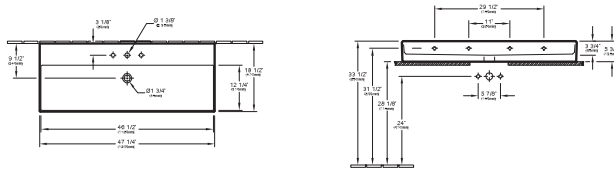
## BATHROOM SINK 47"



Article number	Description	01			pcs/ pal.	lb/ pc.
4A22 UT XX	47 1/4" x 18 1/2" 2xO	Titan Ceram	\$ 1,652	-	-	10 81

Ground contact surface, back of washbasin unglazed, for installation on countertop, incl. cut-out template, to be used with push-button pop-up or non closable grid drain

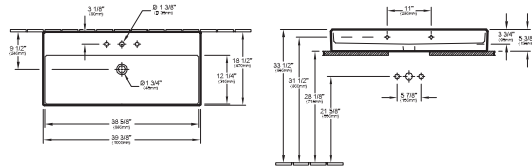
## BATHROOM SINK 47"



Article number	Description	01			pcs/ pal.	lb/ pc.
4A22 UR XX	47 1/4" x 18 1/2" O O O	Titan Ceram	\$ 1,652	-	-	10 81
4A22 US XX	47 1/4" x 18 1/2" O O O O	Titan Ceram	\$ 1,652	-	-	10 81

Ground contact surface, back of washbasin unglazed, for installation on countertop, incl. cut-out template

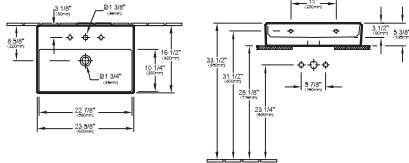
## BATHROOM SINK 39"



Article number	Description	01			pcs/ pal.	lb/ pc.
4A22 UO XX	39 3/8" x 18 1/2" O O O	Titan Ceram	\$ 1,365	-	-	12 63.9
4A22 UQ XX	39 3/8" x 18 1/2" O O O O	Titan Ceram	\$ 1,365	-	-	12 63.9

Ground contact surface, back of washbasin unglazed, for installation on countertop, incl. cut-out template

## BATHROOM SINK 24"



Article number	Description	01			pcs/ pal.	lb/ pc.
4A22 UN XX	23 5/8" x 16 1/2" O O O	Titan Ceram	\$ 740	-	-	20 39

Ground contact surface, back of washbasin unglazed, incl. cut-out template

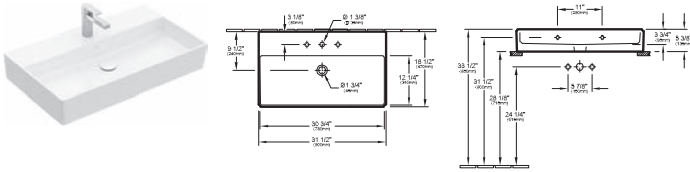
XX = Colour code to be indicated  
01 = White Alpine

# MEMENTO 2.0

US \$ (Dollar)

Please order faucet fittings and soap dispenser separately

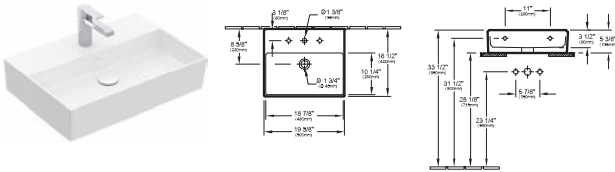
## BATHROOM SINK 31"



Article number	Description		01			pcs/ pal.	lb/ pc.
4A22 UG XX	31 1/2" x 18 1/2" ○○○ ○	Titan Ceram	\$ 1,016	-	-	16	52.3
4A22 UL XX	31 1/2" x 18 1/2" ○○○ ○	Titan Ceram	\$ 1,016	-	-	16	52.3

Ground contact surface, back of washbasin unglazed, Ground contact surface, incl. cut-out template

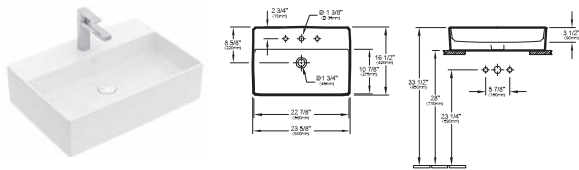
## BATHROOM SINK 20"



Article number	Description		01			pcs/ pal.	lb/ pc.
4A22 UU XX	19 5/8" x 16 1/2" ○○○ ○	Titan Ceram	\$ 686	-	-	18	28.9
4A22 UV XX	19 5/8" x 16 1/2" ○○○ ○	Titan Ceram	\$ 686	-	-	18	28.9

Ground contact surface, back of washbasin unglazed, incl. cut-out template

## SURFACE-MOUNTED BATHROOM SINK 24" (BACK OF SINK GLAZED)



Article number	Description		01			pcs/ pal.	lb/ pc.
4A07 U6 XX	23 5/8" x 16 1/2" ○○○ ○	Titan Ceram	\$ 751	-	-	12	38.8

Ground contact surface, back of washbasin glazed, for installation on countertop, fastening set included, incl. cut-out template

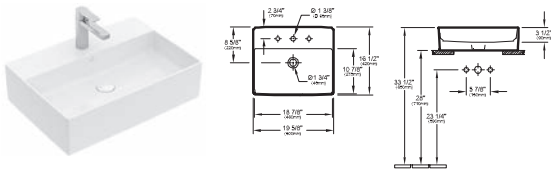
## SURFACE-MOUNTED BATHROOM SINK 20" (BACK OF SINK GLAZED)

XX = Colour code to be indicated  
01 = White Alpine

# MEMENTO 2.0

US \$ (Dollar)

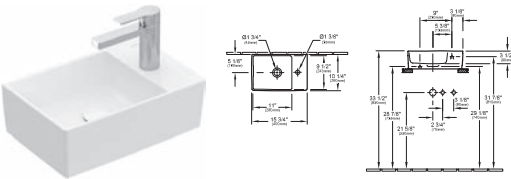
Please order faucet fittings and soap dispenser separately



Article number	Description		01			pcs/ pal.	lb/ pc.
4A07 U5 XX	19 5/8" x 16 1/2"	Titan Ceram	\$ 672	-	-	16	32.4

Ground contact surface, back of washbasin glazed, for installation on countertop, fastening set included, incl. cut-out template

## HAND SINK



Article number	Description		01			pcs/ pal.	lb/ pc.
4323 UM XX	15 3/4" x 10 1/4"	Titan Ceram	\$ 476	-	-	48	17

Ground contact surface, for installation on countertop, incl. cut-out template  
Please note: unclosable grid drain must be used with models without overflow

XX = Colour code to be indicated  
01 = White Alpine



# NOVO

Sanitaryware



Ceramic colours



01 = White  
Alpine

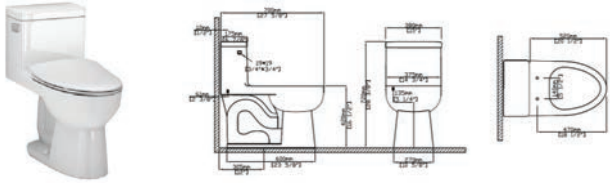
# NOVO

US \$ (Dollar)

Registered design

Please order faucet fittings and soap dispenser separately

## ONE-PIECE TOILET



Article number	Description	01	XX	pcs/ pal.	lb/ pc.
6200 UC R1	15" x 27 5/8" floor-standing, open trapway Consisting of: Siphonic WC, rough in 12" from the wall, Tank, bottom inlet, flushing mechanism with chrome trip lever, WC-seat with QuickRelease and SoftClosing hinges, incl. fastening set, AVAILABLE Q1 2023	\$658	-		
F 74 XX	TRIP LEVER (optional) Traditional style in .502 (Polished Nickel), .503 (Satin Nickel), .504 (Polished Brass), .508 (Venetian Bronze), .05 (Matte Black), .01 (White Enamel)	-	\$66		2.2

XX = Colour code to be indicated  
01 = White Alpine

# STRADA

US \$ (Dollar)

Registered design



## Ceramic colours



01 = White  
Alpine

XX = Colour code to be indicated  
01 = White Alpine

\*\* - Special Order, estimated 27 weeks lead time

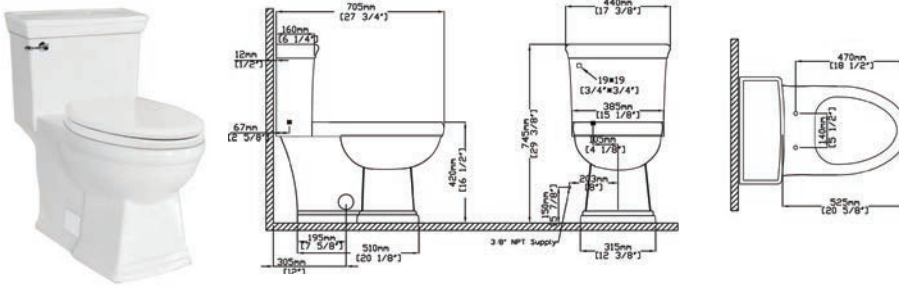


# STRADA

US \$ (Dollar)

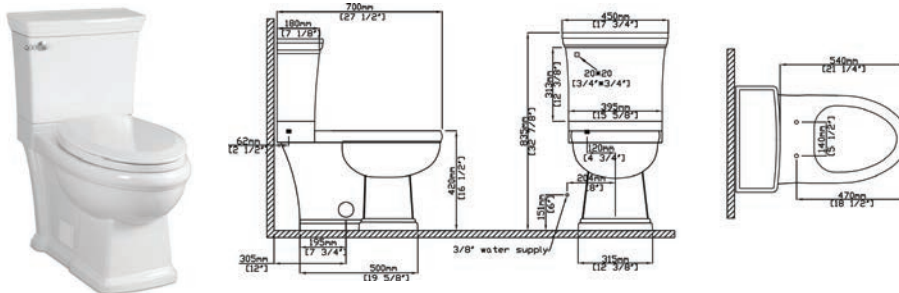
Registered design

## ONE-PIECE TOILET



Article number	Description	01	XX	pcs/pal.	lb/pc.
6330 UC 01	14 3/8" x 28 3/8" floor-standing, open trapway Consisting of: Siphonic WC, rough in 12" from the wall, Tank, bottom inlet, flushing mechanism with chrome trip lever, WC-seat with QuickRelease and SoftClosing hinges, incl. fastening set	\$941	-	-	-
F 65 XX	TRIP LEVER (optional) Traditional style in .502 (Polished Nickel), .503 (Satin Nickel), .504 (Polished Brass), .508 (Venetian Bronze), .05 (Matte Black), .01 (White Enamel)	-	\$66	-	2.2

## SIPHONIC TOILET



Article number	Description	01	XX	pcs/pal.	lb/pc.
3210 UC 01	17 3/4" x 27 1/2" ADA	\$431	-	-	91.7
siphonic jet model, compact-elongated design, A.D.A. height, floor-standing, skirted trapway with fixation covers, 12" rough-in, WC-seat with QuickRelease and SoftClosing hinges, incl. fastening set					
3210 UT 01	TANK Standard bottom inlet, flushing mechanism with trip lever in chrome finish, 1.28 gpf (4.8 lpf)	\$205	-	-	30.9
F 65 XX	TRIP LEVER (optional) Traditional style in .502 (Polished Nickel), .503 (Satin Nickel), .504 (Polished Brass), .508 (Venetian Bronze), .05 (Matte Black), .01 (White Enamel)	-	\$66	-	2.2

XX = Colour code to be indicated  
01 = White Alpine

\*\* - Special Order, estimated 27 weeks lead time

# SUBWAY

Sanitaryware and Bathroom Furniture



### Ceramic colours



01 = White  
Alpine

### Front- / Body colors



DH = Glossy  
White



E8 = White  
Wood



FP = Glossy  
Grey



VG = Truffle  
Grey



RK = Stone  
Oak

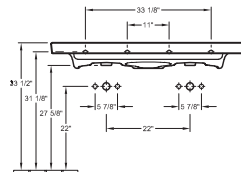
# SUBWAY

US \$ (Dollar)

Registered design

Please order faucet fittings and soap dispenser separately

## DOUBLE VANITY BATHROOM SINK 51"



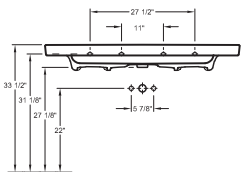
Article number	Description		01			pcs/ pal.	lb/ pc.
7175 U4 XX	51 1/8" x 18 1/2" 2x	<b>ADA</b>	\$ 1,300	-	-	8	88.8

incl. fastening set for installation to the wall

CAN BE PAIRED WITH FURNITURE

Article number	Description		DH, E8, FP, VG		lb/ pc.
A917 U1 XX	SUBWAY VANITY UNIT 50 5/8" x 23 1/4" x 17 5/8", wall-mounted, fastening set included, see pg 37 for full details		\$ 3,200	-	54

## VANITY BATHROOM SINK 51"



Article number	Description		01			pcs/ pal.	lb/ pc.
7176 U0 XX	51 1/8" x 18 1/2"	<b>ADA</b>	\$ 1,256	-	-	8	86.4

incl. fastening set for installation to the wall

CAN BE PAIRED WITH FURNITURE

Article number	Description		DH, E8, FP, VG		lb/ pc.
A916 U1 XX	SUBWAY VANITY UNIT 50 5/8" x 23 1/4" x 17 5/8", wall-mounted, fastening set included, , see pg 37 for full details		\$ 3,200	-	57

Ceramic Colors: XX = Colour code to be indicated  
01 = White Alpine

Furniture Finishes: XX = Insert front and body colour  
DH = Glossy White, E8 = White Wood, FP = Glossy Grey, FQ = Oak Graphite, VG = Truffle Grey, RK = Stone Oak

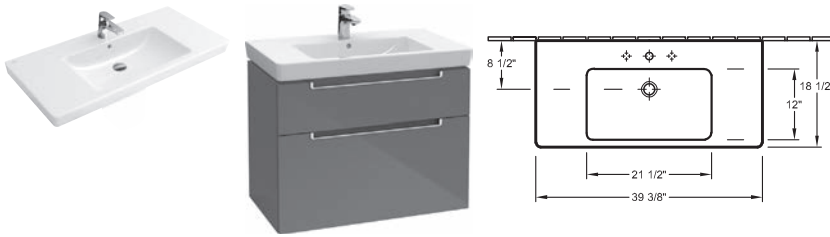
# SUBWAY

US \$ (Dollar)

Registered design

Please order faucet fittings and soap dispenser separately

## VANITY BATHROOM SINK 39"



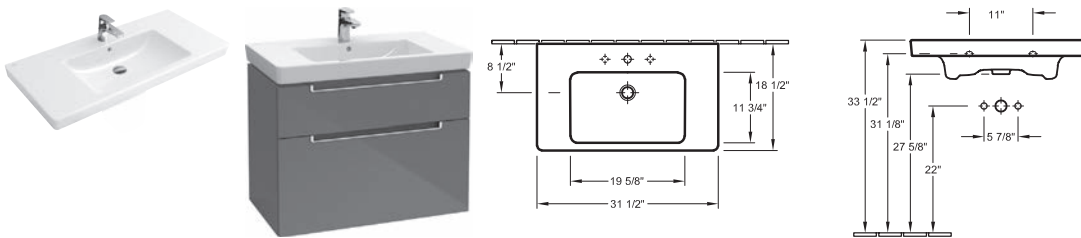
Article number	Description		01			pcs/ pal.	lb/ pc.
7175 U2 XX	39 3/8" x 18 1/2" ○○○ ○	ADA	\$ 1,110	-	-		58.6
7175 U0 XX	39 3/8" x 18 1/2" ○○○○ ○	ADA	\$ 1,083	-	-	8	58.6

incl. fastening set for installation to the wall

CAN BE PAIRED WITH FURNITURE

Article number	Description		DH, E8, FP, VG, RK			lb/ pc.
A915 U1 XX	SUBWAY VANITY UNIT 38 7/8" x 23 1/4" x 17 5/8", wall-mounted, fastening set included, , see pg 37 for full details		\$ 2,132	-	-	42

## VANITY BATHROOM SINK 31"



Article number	Description		01			pcs/ pal.	lb/ pc.
7175 U3 XX	31 1/2" x 18 1/2" ○○○ ○	ADA	\$ 835	-	-		52.5
7175 U1 XX	31 1/2" x 18 1/2" ○○○○ ○	ADA	\$ 810	-	-	10	52.5

incl. fastening set for installation to the wall

CAN BE PAIRED WITH FURNITURE

Article number	Description		DH, E8, FP, VG, RK			lb/ pc.
A914 U1 XX	SUBWAY VANITY UNIT 31" x 23 1/4" x 17 5/8", wall-mounted, fastening set included, , see pg 37 for full details		\$ 1,897	-	-	36

Ceramic Colors: XX = Colour code to be indicated  
01 = White Alpine

Furniture Finishes: XX = Insert front and body colour  
DH = Glossy White, E8 = White Wood, FP = Glossy Grey, FQ = Oak Graphite, VG = Truffle Grey, RK = Stone Oak

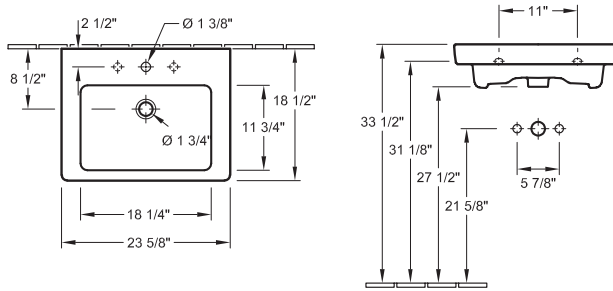
# SUBWAY

US \$ (Dollar)

Registered design

Please order faucet fittings and soap dispenser separately

## BATHROOM SINK 24"



Article number	Description		01			pcs/ pal.	lb/ pc.
7113 U3 XX	23 5/8" x 18 1/2" ○○○ ○	<b>ADA</b>	\$ 456	-	-	12	41
7113 U1 XX	23 5/8" x 18 1/2" ○○○○ ○	<b>ADA</b>	\$ 428	-	-	12	41

incl. fastening set for installation to the wall

CAN BE PAIRED WITH FURNITURE

Article number	Description		DH, E8, FP, VG, RK		lb/ pc.
A909 U1 XX	SUBWAY VANITY UNIT 23 1/8" x 23 1/4" x 17 7/8", wall-mounted, fastening set included, , see pg 37 for full details		\$ 1,514	-	22

Ceramic Colors: XX = Colour code to be indicated  
01 = White Alpine

Furniture Finishes: XX = Insert front and body colour  
DH = Glossy White, E8 = White Wood, FP = Glossy Grey, FQ = Oak Graphite, VG = Truffle Grey, RK = Stone Oak

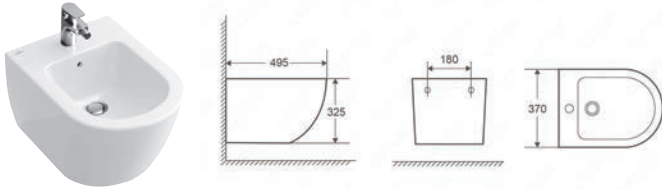
# SUBWAY

US \$ (Dollar)

Registered design

Please order faucet fittings and soap dispenser separately

## WALL-MOUNTED BIDET



Article number	Description	01			pcs/ pal.	lb/ pc.
4600 UF 01	14 1/2" x 19 1/2" (approx)	\$ 478	-	-	-	-

wall-mounted, this product works with industry standard in-wall carrier systems such as those manufactured by Geberit and Viega, Incl. fastening set for concealed mounting system

## WALL-MOUNTED TOILET WITH RIMLESS FLUSHING

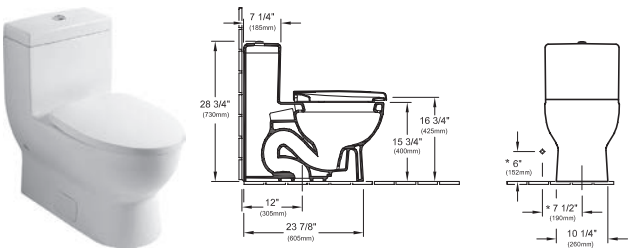


Article number	Description	01			pcs/ pal.	lb/ pc.
7400 UC 01	21-1/4" x 14-3/8" x 16-3/4" <b>ADA</b>	\$520	-	-	-	-

washdown model, wall-mounted, concealed trapway, incl. mounting hardware and seat, this product works with industry standard in-wall carrier/tank systems such as those manufactured by Viega, Geberit and TOTO. Please refer to their respective compatibility charts.

## ONE-PIECE TOILET

Overall dimensions: (L) 28 3/8" x (W) 15" x (H) 28 3/4"



Article number	Description	01			pcs/ pal.	lb/ pc.
6616 US 01	15" x 29 3/8" floor-standing, concealed trapway Consisting of: Siphonic WC, rough in 12" from the wall, Tank, bottom inlet, flushing mechanism with chrome trip lever, dual flush 1.6/1.0 gpf, includes seat	\$ 1,210	-	-	6	60.4

Ceramic Colors: XX = Colour code to be indicated  
01 = White Alpine

Furniture Finishes: XX = Insert front and body colour  
DH = Glossy White, E8 = White Wood, FP = Glossy Grey, FQ = Oak Graphite, VG = Truffle Grey, RK = Stone Oak

# SUBWAY

US \$ (Dollar)

Registered design

The washbasins are to be ordered separately.

**Front:**

laminated MDF in DH, E8, FP (19 mm)  
 direct-laminated LDF in VG (19 mm)  
 horizontal grain in E8  
 matching interior color for DH, FP  
 interior color to match décor for E8, VG

**Body:**

laminated MDF in DH, FP (19 mm)  
 direct-laminated LDF in E8, VG (19 mm)  
 horizontal grain for vanity unit in E8  
 vertical grain for side cabinet, tall cabinet in E8  
 matching interior color for DH, FP

interior color to match décor for E8, VG

**Top panel:**

Optiwhite glass painted on rear in Glass Silver Grey (R) or Glass White (S) (10 mm)

**Drawers:**

SoftClosing feature

**Doors:**

SoftClosing feature

**Handles:**




glossy chrome


**Interior compartments :**

adjustable glass partitions (8 mm)  
 accessory boxes made of grey translucent plastic

Please note:

For further information such as tap fitting positions, installation and fastening dimensions etc. please see the technical drawings.

	VANITY UNIT	VANITY UNIT	VANITY UNIT	VANITY UNIT
				
Article number	A917 U1 XX	A916 U1 XX	A915 U1 XX	A914 U1 XX
Dimensions (w x h x d)	50 5/8" x 23 1/4" x 17 5/8"	50 5/8" x 23 1/4" x 17 5/8"	38 7/8" x 23 1/4" x 17 5/8"	31" x 23 1/4" x 17 5/8"
For combination with	Subway 7175 U4	Subway 7176 U0	Subway 7175 U2/U0	Subway 7175 U3/U1
Equipped with	1x Accessories package 2 4 x pull-out compartments	1x Accessories package 2 4 x pull-out compartments	1x Accessories package 2 2 x pull-out compartments	6 x glass drawer dividers 1 x accessory box, small 1 x accessory box, medium 1 x accessory box, large
Installation	wall-mounted	wall-mounted	wall-mounted	wall-mounted
Scope of delivery	fastening set included	fastening set included	fastening set included	fastening set included
lb/pc.	119.1	125.7	92.6	79.4
DH, E8, FP, VG, RK	\$ 3,200	\$ 3,200	\$ 2,132	\$ 1,897

	VANITY UNIT
	
Article number	A909 U1 XX
Dimensions (w x h x d)	23 1/8" x 23 1/4" x 17 7/8"
For combination with	Subway 7113 U3/U1
Equipped with	1 x accessory box, large 2 x pull-out compartments
Installation	wall-mounted
Scope of delivery	fastening set included
lb/pc.	48.5
DH, E8, FP, VG, RK	\$ 1,514


XX = Insert front and body colour  
 DH = Glossy White, E8 = White Wood, FP = Glossy Grey, VG = Truffle Grey,  
 RK = Stone Oak

# SUBWAY

US \$ (Dollar)

Registered design

The washbasins are to be ordered separately.

	TALL CABINET	TALL CABINET
		
Article number	A707 U1 XX	A708 U1 XX
Dimensions (w x h x d)	13 3/4" x 65" x 14 5/8"	13 3/4" x 65" x 14 5/8"
Hinges	Hinges on left	Hinges on right
Equipped with	2 x panel doors 1 x drawer 3 x shelves	2 x panel doors 1 x drawer 3 x shelves
Installation	wall-mounted	wall-mounted
Scope of delivery	fastening set included	fastening set included
lb/pc.	83.8	83.8
DH, E8, FP, VG, RK	\$ 2,066	\$ 2,057

XX = Insert front and body colour

DH = Glossy White, E8 = White Wood, FP = Glossy Grey, VG = Truffle Grey,

RK = Stone Oak



# VENTICELLO

Sanitaryware and Bathroom Furniture

VENTICELLO



### Ceramic colours



01 = White  
Alpine

### Front- / Body colors



DH = Glossy  
White



E8 = White  
Wood



PN = Elm  
Impreso



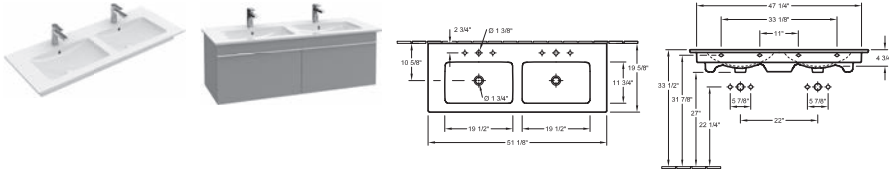
RK = Stone  
Oak

# VENTICELLO

US \$ (Dollar)

Please order faucet fittings and soap dispenser separately

## DOUBLE VANITY WASHBASIN (BASIN ONLY) 51"



Article number	Description	01**			pcs/ pal.	lb/ pc.
4111 U4 XX	51 1/8" x 19 5/8" 2x     fastening set included	\$ 1,378	-	-	8	84.2

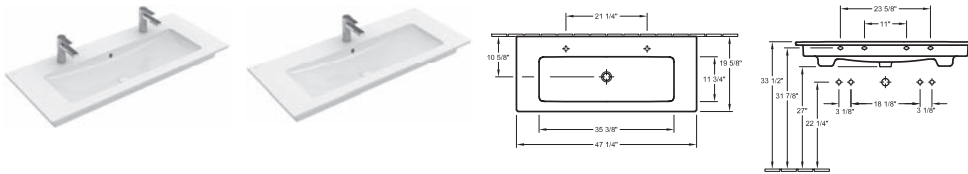
towel holder (not included in scope of delivery): side installation (mountable: 2 pc.)



9296 U4 D7	TOWEL HOLDER please order 2 stainless steel, fastening set included	-	-	\$ 286		1.9
------------	--	---	---	--------	--	-----

CAN BE PAIRED WITH FURNITURE

Article number	Description				DH, E8, PN, RK	lb/ pc.
A939 U1 XX	VENTICELLO VANITY UNIT 49 3/8" x 16 1/2" x 19 3/4", wall-mounted, fastening set included, space saving siphon, see pg 43 for full details				\$ 2,235	36

## VANITY BATHROOM SINK 47"



Article number	Description	01			pcs/ pal.	lb/ pc.
4104 U1 XX	47 1/4" x 19 5/8" 2x   fastening set included	ADA	\$ 1,321	-	-	10 71.7

CAN BE PAIRED WITH FURNITURE

Article number	Description				DH, E8, PN, RK	lb/ pc.
A938 U1 XX	VENTICELLO VANITY UNIT 45 3/8" x 16 1/2" x 19 3/4", wall-mounted, fastening set included, , see pg 43 for full details				\$ 2,297	44.5

XX = Colour code to be indicated  
01 = White Alpine

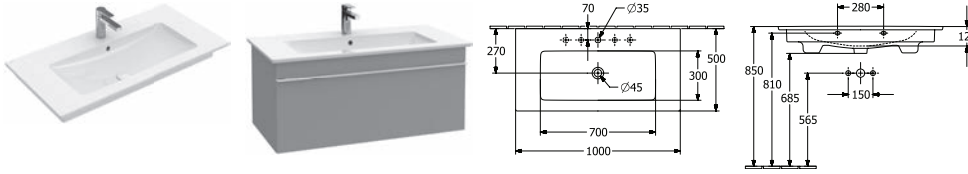
XX = Colour code to be indicated  
DH = Glossy White, E8 = White Wood, FQ = Oak Graphite, PN = Elm Impresso, RK = Stone Oak

# VENTICELLO

US \$ (Dollar)

Please order faucet fittings and soap dispenser separately

## VANITY BATHROOM SINK 39", VANITY BATHROOM SINK 39" WITH CENTERED BASIN

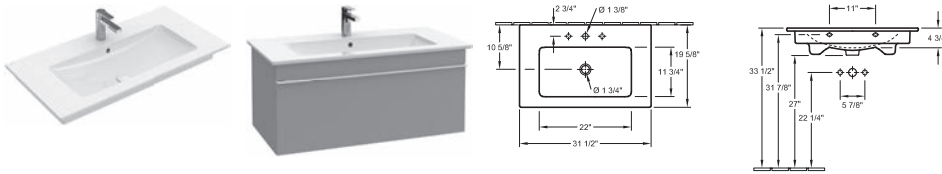


Article number	Description		01		D7	pcs/ pal.	lb/ pc.
4104 U3 01	39 3/8" x 19 5/8"    fastening set included	<b>ADA</b>	\$ 1,142	-	-	10	59.1
9296 U4 D7	TOWEL HOLDER please order 2 stainless steel, fastening set included		-	-	\$ 286		1.9

CAN BE PAIRED WITH FURNITURE

Article number	Description				DH, E8, PN, RK		lb/ pc.
A935 U1 XX	VENTICELLO VANITY UNIT 37 1/2" x 16 1/2" x 19 3/4", wall-mounted, fastening set included, see pg 43 for full details				\$ 1,497	-	24

## VANITY BATHROOM SINK 31"



Article number	Description		01			pcs/ pal.	lb/ pc.
4104 U5 XX	31 1/2" x 19 5/8"    fastening set included	<b>ADA</b>	\$ 816	-	-	12	47.6

fastening set included

9296 U4 D7	TOWEL HOLDER please order 2 stainless steel, fastening set included		-	-	\$ 286		1.9
------------	---	--	---	---	--------	--	-----

CAN BE PAIRED WITH FURNITURE

Article number	Description				DH, E8, PN, RK		lb/ pc.
A934 U1 XX	VENTICELLO VANITY UNIT 29 5/8" x 16 1/2" x 19 3/4", wall-mounted, fastening set included, see pg 43 for full details				\$ 1,331	-	21

XX = Colour code to be indicated  
01 = White Alpine

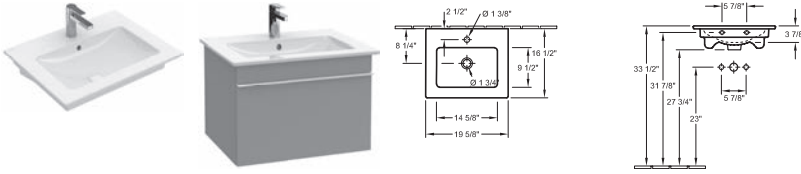
XX = Colour code to be indicated  
DH = Glossy White, E8 = White Wood, FQ = Oak Graphite, PN = Elm Impreso, RK = Stone Oak

# VENTICELLO

US \$ (Dollar)

Please order faucet fittings and soap dispenser separately

## BATHROOM SINK 24"



Article number	Description		01			pcs/ pal.	lb/ pc.
4124 U1 XX	23 5/8" x 19 5/8" <b>ADA</b>	\$ 573	-	-		12	38.4
fastening set included							
9296 U4 D7	TOWEL HOLDER please order 2 stainless steel, fastening set included	-	-	\$ 286			1.9
<b>CAN BE PAIRED WITH FURNITURE</b>							
Article number	Description			DH, E8, PN, RK			lb/ pc.
A932 U1 XX	VENTICELLO VANITY UNIT 21 3/4" x 16 1/2" x 19 3/4", wall-mounted, fastening set included, , see pg 43 for full details			\$ 1,176	-		16.5

XX = Colour code to be indicated  
01 = White Alpine

XX = Colour code to be indicated  
DH = Glossy White, E8 = White Wood, FQ = Oak Graphite, PN = Elm Impreso, RK = Stone Oak

# VENTICELLO

US \$ (Dollar)




The washbasins are to be ordered separately.


**Front:**  
 laminated MDF in DH, E8, PN (16 mm)  
 horizontal grain in E8, PN  
 matching interior color for DH  
 interior color to match décor for E8  
**Body:**  
 laminated MDF in DH (16 mm)  
 direct-laminated LDF in E8, PN (16 mm)  
 horizontal grain in E8, PN  
 matching interior color for DH  
 interior color to match décor for E8  
 Washbasin countertop:

painting MDF in DH (16 mm)  
 direct-laminated LDF in E8, PN (16 mm)  
**Drawers:**  
 slip-resistant base  
 SoftClosing feature  
**Doors:**  
 SoftClosing feature  
**Handles:**  
 Aluminium in Chrome  
**Interior compartments :**  
 adjustable glass partitions (8 mm)  
 accessory boxes made of grey translucent plastic

Please note:

For further information such as tap fitting positions, installation and fastening dimensions etc. please see the technical drawings.

	VANITY UNIT	VANITY UNIT	VANITY UNIT	VANITY UNIT
				
Article number	A939 U1 XX	A938 U1 XX	A935 U1 XX	A934 U1 XX
Dimensions (w x h x d)	49 3/8" x 16 1/2" x 19 3/4"	45 3/8" x 16 1/2" x 19 3/4"	37 1/2" x 16 1/2" x 19 3/4"	29 5/8" x 16 1/2" x 19 3/4"
For combination with	Venticello 4111 U3/U4	Venticello 4104 U1/U2	Venticello 4104 U3/U4, 4134 U1/U2/ U3/U4	Venticello 4104 U5/U6
Equipped with	2x Accessories package 1 2 x pull-out compartments with slip resistant base	2x Accessories package 1 2 x pull-out compartments with slip resistant base	1x Accessories package 1 1 x pull-out compartment with slip resistant base	1x Accessories package 1 1 x pull-out compartment with slip resistant base
Installation	wall-mounted	wall-mounted	wall-mounted	wall-mounted
Scope of delivery	fastening set included, space saving siphon	fastening set included	fastening set included	fastening set included
lb/pc.	79.4	98.1	52.9	46.3
DH, E8, PN, RK	\$ 2,235	\$ 2,297	\$ 1,497	\$ 1,331


	VANITY UNIT
	
Article number	A932 U1 XX
Dimensions (w x h x d)	21 3/4" x 16 1/2" x 19 3/4"
For combination with	Venticello 4124 U1 / U2
Equipped with	1x Accessories package 1 1 x pull-out compartment with slip resistant base
Installation	wall-mounted
Scope of delivery	fastening set included
lb/pc.	36.4
DH, E8, PN, RK	\$ 1,176

XX = Insert front and body colour  
 DH = Glossy White, E8 = White Wood, PN = Elm Impresso, RK = Stone Oak

# VENTICELLO

US \$ (Dollar)

The washbasins are to be ordered separately.

	TALL CABINET	TALL CABINET
		
Article number	A951 U0 XX	A951 U1 XX
Dimensions (w x h x d)	15 7/8" x 60 7/8" x 14 5/8"	15 7/8" x 60 7/8" x 14 5/8"
Hinges	Hinges on left	Hinges on right
Equipped with	1 x panel door 3 x glass shelves 1 x fixed shelf	1 x panel door 3 x glass shelves 1 x fixed shelf
Installation	wall-mounted	wall-mounted
Scope of delivery	fastening set included	fastening set included
lb/pc.	71.7	71.7
<b>DH, E8, PN, RK</b>	<b>\$ 1,554</b>	<b>\$ 1,554</b>

XX = Insert front and body colour

DH = Glossy White, E8 = White Wood, PN = Elm Impresso, RK = Stone Oak



# Villeroy & Boch

Distributed By:

Icera LLC  
14520 Delta Lane, Suite 104  
Huntington Beach  
CA 92647  
[sales@icerausa.com](mailto:sales@icerausa.com)  
855 444 2372

KPV-2023V1.01